

Mountain Air Drive Extension Fact Sheet



Project # CFHWY00710 / Federal # 0001690

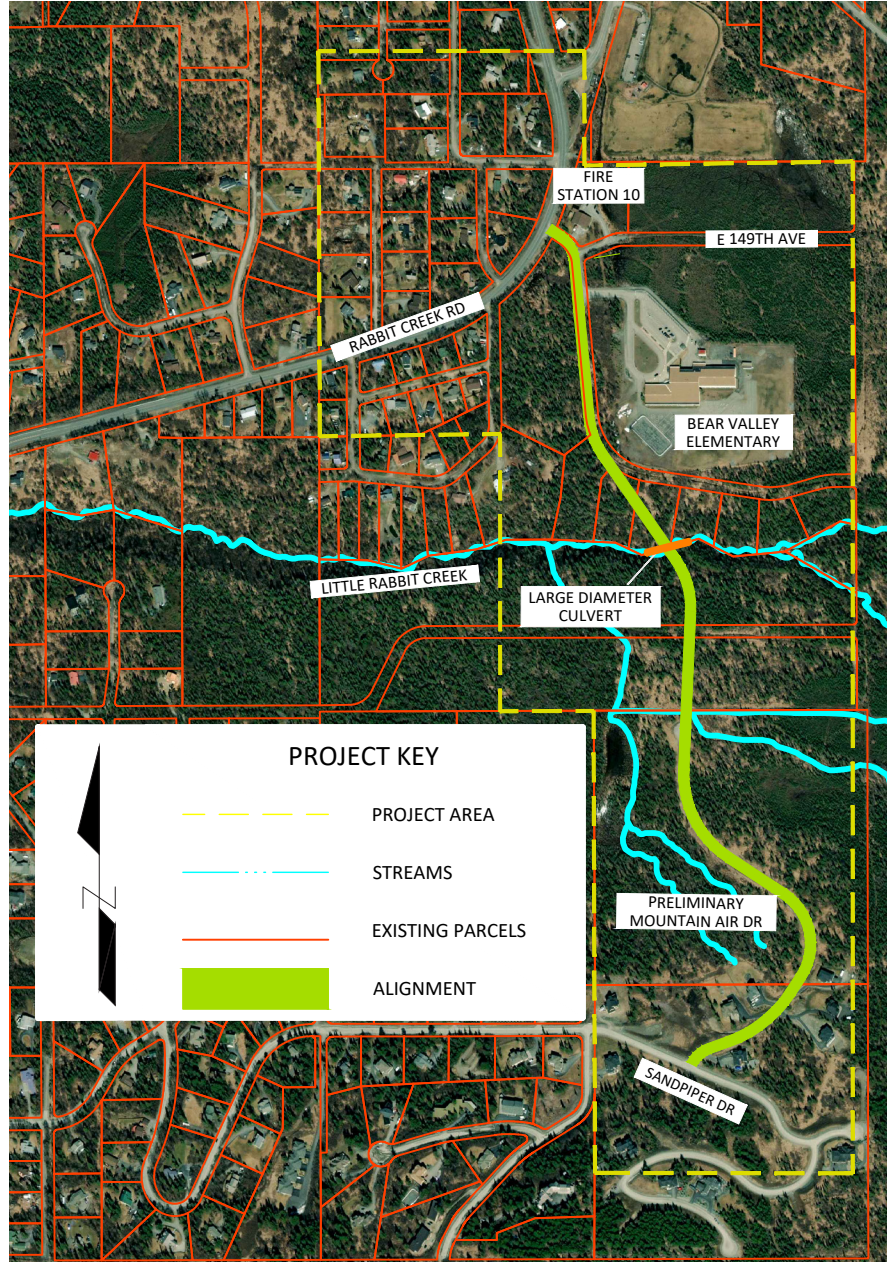
Project Background

The Mountain Air Drive Extension Project will extend Mountain Air Drive from Rabbit Creek Road to Sandpiper Drive.

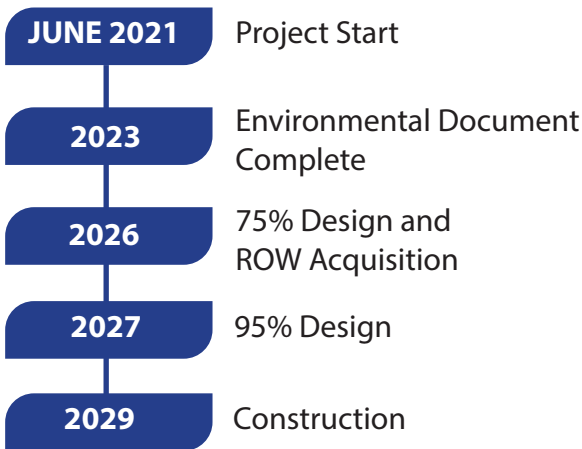
The project may include:

- drainage improvements
- right-of-way acquisitions
- utilities
- large diameter culvert crossing at Little Rabbit Creek
- Americans with Disabilities Act improvements
- roadside hardware
- and a multi-use non-motorized pathway.

Project Area Map



Schedule



Contact

Visit the project website or contact the project team with comments or questions.

Connor Eshleman, PE
Project Manager

DOT&PF
E: connor.eshleman@alaska.gov
P: 907-269-0595

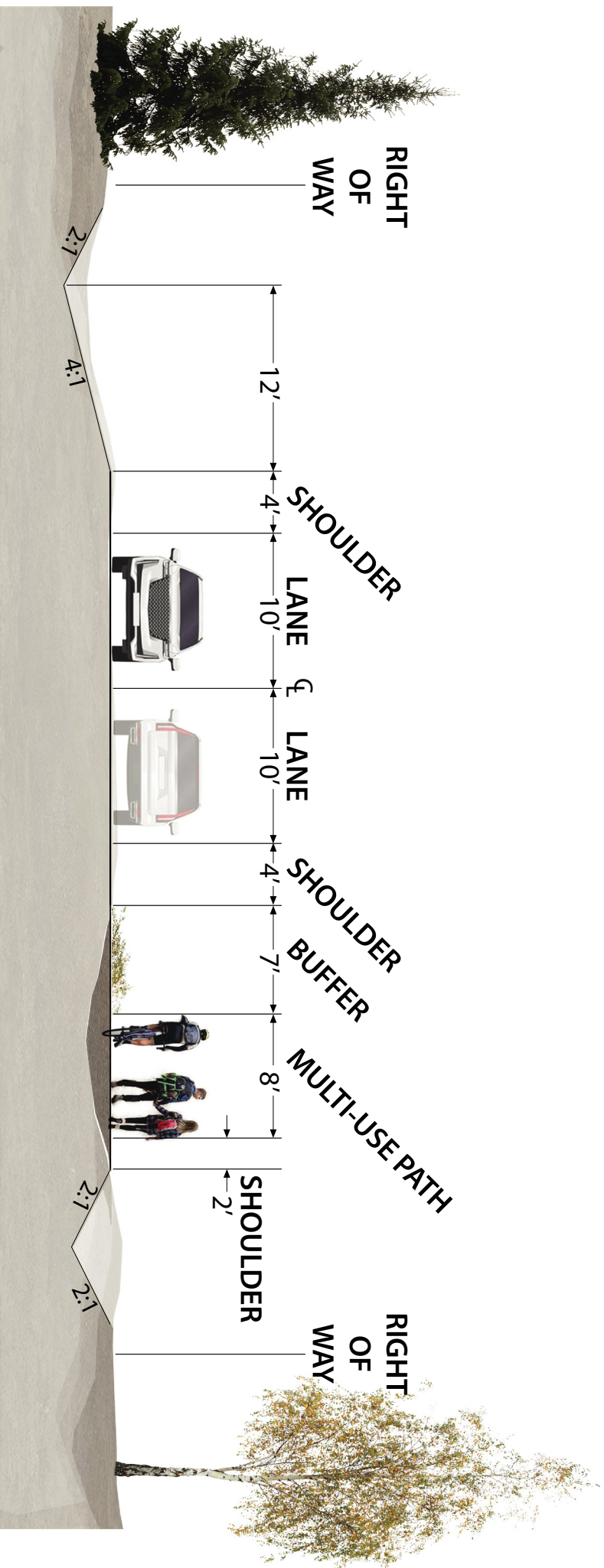
Holly Spoth-Torres
Public Involvement Lead

Huddle AK
E: holly@huddleak.com
P: 907-223-0136

Stephanie Mormilo, PE
Design Project Manager

HDL Engineering Consultants, LLC
E: smormilo@hdlalaska.com
P: 907-564-2120





MOUNTAIN AIR DRIVE
PRELIMINARY TYPICAL SECTION